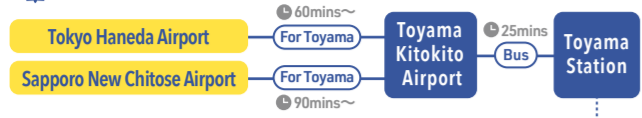


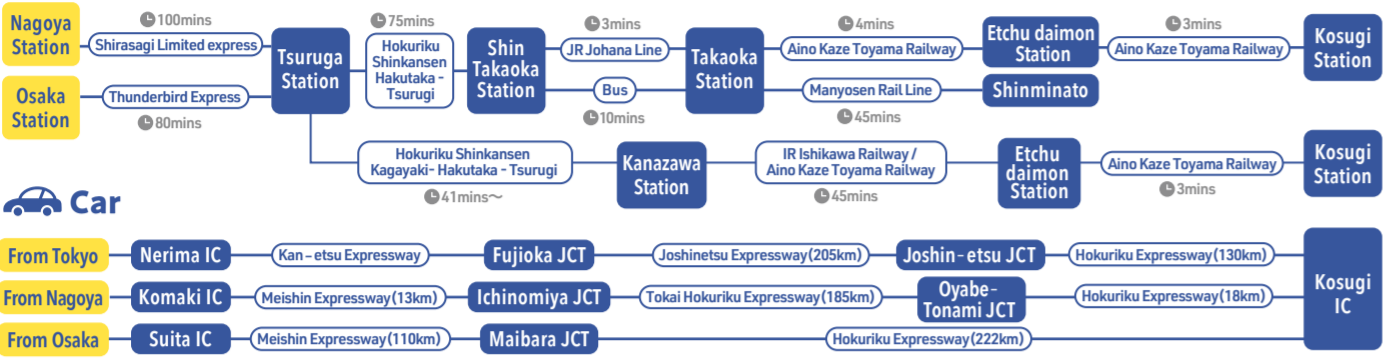
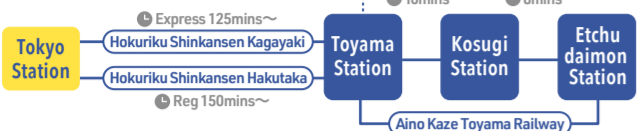
# ACCESS

## From within Japan

### Air travel



### Train



## From within Toyama

### From Toyama Station

**To Shinminato**  
 Ai no Kaze Toyama Railway (Towards Kanazawa) - From Toyama Station to Takaoka Station (18min). From Takaoka Station Manyosen Rail Line - From Takaoka Station Tram stop to Shinminato (45min).

**To Kosugi**  
 Ai no Kaze Toyama Railway (Towards Kanazawa) - From Toyama Station to Kosugi Station (10min). From Kosugi Station to Shinminato take the Community bus.

### From Shintakaoka Station

**To Shinminato**  
 JR Johana Line (to Takaoka) - From Shintakaoka Station to Takaoka Station (3min). From Takaoka Station Manyosen Rail Line - From Takaoka Station Tram stop to Shinminato (45min).

**To Kosugi**  
 JR Johana Line (to Takaoka) From Shintakaoka Station to Takaoka Station (3min). From Takaoka Station Ai no Kaze Toyama Railway (Towards Toyama). Takaoka Station to Kosugi Station (7min).

### From Takaoka Station

**To Shinminato**  
 From Takaoka Station Manyosen Rail Line - From Takaoka Station Tram stop to Shinminato (45min).

**To Kosugi**  
 From Takaoka Station Ai no Kaze Toyama Railway (Towards Toyama). Takaoka Station to Kosugi Station (7min).



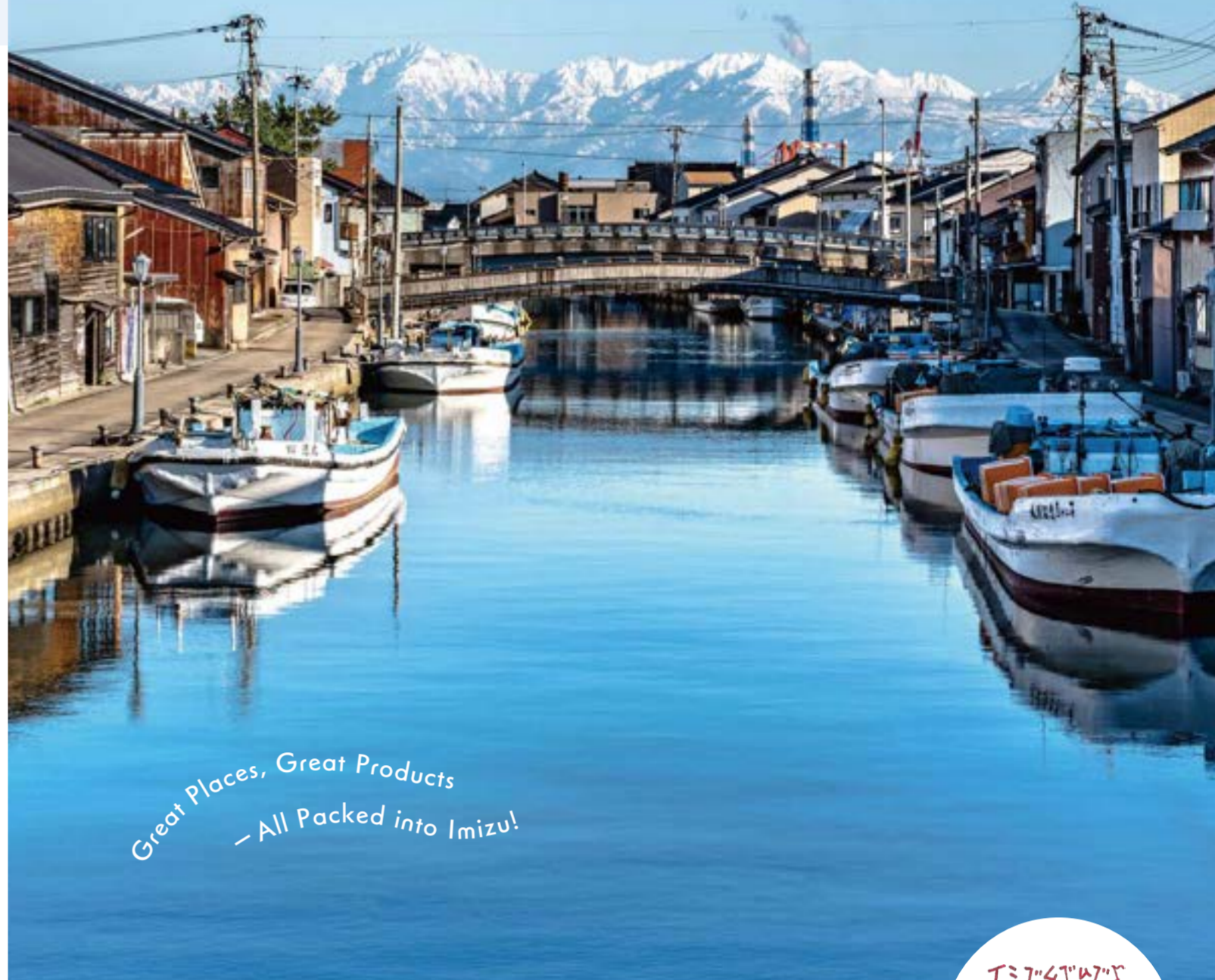
## Local specialties in Imizu

Toyama bay is known as "Nature's fish pen" due to its unique shape boasts fishing grounds within very close proximity of its seafood markets. This makes the catches sold in Imizu exceedingly fresh. Furthermore as Imizu city is wedged between both Jinzugawa and Shogawa rivers it is a perfect place to grow a wide variety delicious fruits and vegetables. Please come and relish in the bounty of both the sea and nature here in Imizu.

Data listed is current as of April 2024

# IMIZU

Toyama Prefecture, Imizu City



Great Places, Great Products  
 - All Packed into Imizu!

Imizu City official website



Imizu City X (formerly Twitter) @imizukouhou



Kiraraka Imizu Tourism NAVI website



Muzumuzu-kun Instagram @muzumuzu\_kun



Imizu City Tourism and Town Development Division TEL : 0766-51-6676

## Imizu Bay Area

Shinminato - Hojuzo - Horioka - Ebie area



### 6 Bay gurun



Take a slow paced (19km) tour on a three wheeled electric buggy. Being driven around as many as 70 tour spots in the bay area, a riverside course is also available.  
 ☎ 0766-82-6277 (Kaio Transportation Group Limited)

### C Bay car



This electric rental car for four people is the perfect way to enjoy the bay area while driving. (License required)  
 ☎ 0766-84-9600 (Crossbay Shinminato)

### T Bay Trike



A fun way to enjoy the bay area and its narrow streets by electric trike. (License required)  
 ☎ 0766-84-9600 (Crossbay Shinminato)

### 🚲 Rental bike



A bike rental service that can be rented and returned around the Imizu Bay area. Adult and children's bikes are available, as well as electric bikes and cross bikes.  
 ☎ 1day 500 yen (9:00-17:00)  
 ☎ 0766-84-9600 (Crossbay Shinminato)  
 ☎ 0766-30-2552 (Kawa-no-Eki)  
 ☎ 0766-82-1830 (Shinminato Sightseeing boat)  
 ☎ 0766-83-0255 (Imizu Tourist Information Center)

## MOBILITY

### 8 Kaiowamaru Park

With over 1 million visitors each year Kaiowamaru Park is one of the most well known tourist spots in Toyama. The Kaiowamaru was sail boat used for sailing training over a period of 60 years, it now sits open to the public in the park with the picturesque Tateyama mountain range in its background. The park also has a cafe and wild bird sanctuary.  
 ☎ 8 Kaiomachi, Imizu ☎ 0766-82-5181



### 9 Shinminato Bridge

Connecting Shinminato port with a length of 3.6km Shinminato Bridge is the largest cable bridge on Japan sea coastline. On clear days you can take in beautiful views of both the Tateyama mountain range and Notohanto Island. With vehicle access above and a walkway underneath you can enjoy both a drive or a walk along Aino-kaze promenade.  
 ☎ Kaiomachi ~ Kairyumachi ☎ 0766-84-8292 (Toyama New Port Management Office)

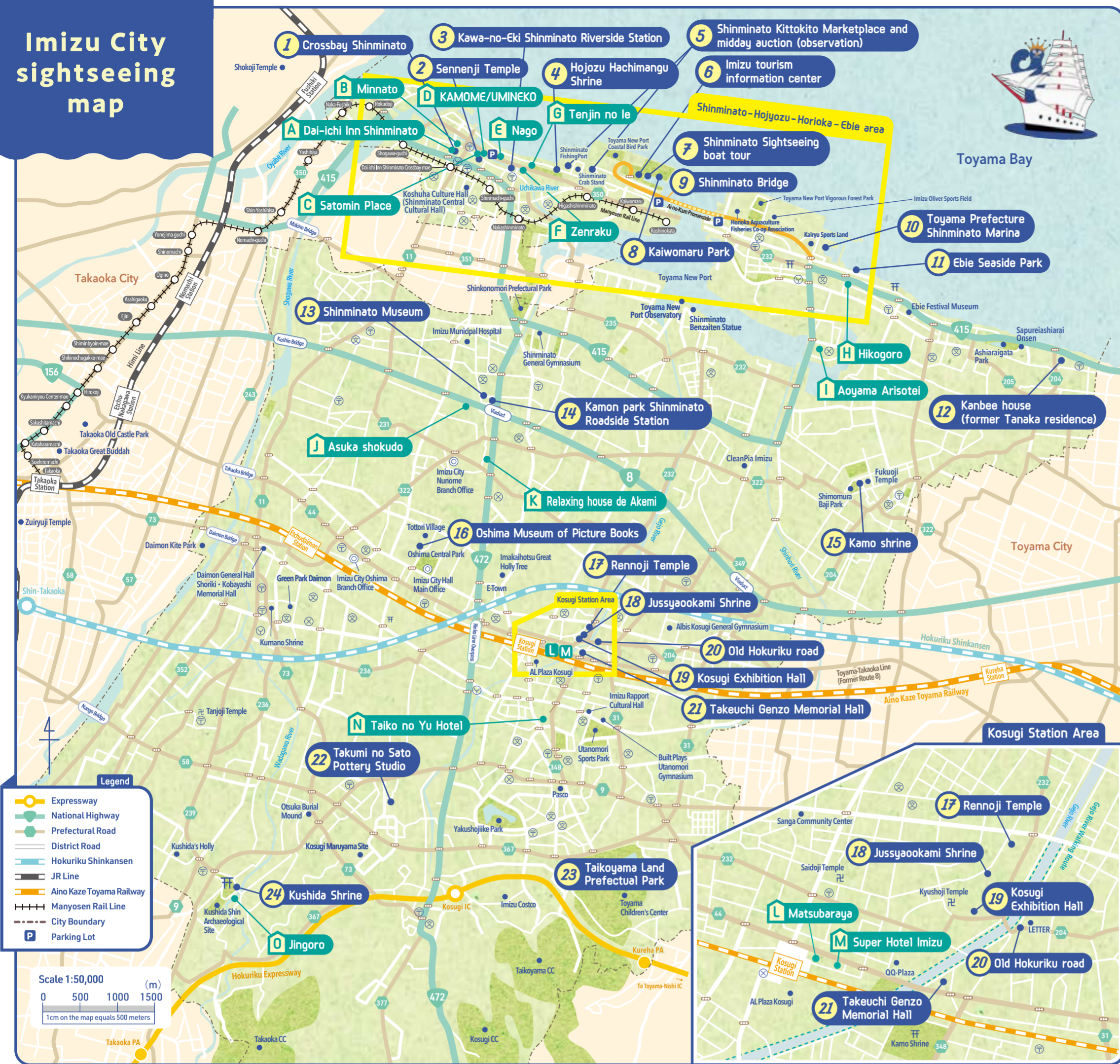


### 6 Imizu tourism information center

Positioned in the center of the bay area Imizu tourist center has a wide range of event information, sightseeing maps and pamphlets. The center is covered in Muzumuzu-kun art so you can't miss it.  
 ☎ 2 Kaiomachi, Imizu ☎ 0766-83-0255



# Imizu City sightseeing map



**1 Crossbay Shinminato**

A multipurpose center with a tourist information corner, cafe, sightseeing map of the bay area and regularly held weekend events.

2-10-30 Honmachi, Imizu  
☎ 0766-84-9600



**2 Sennenji Temple**

A well known temple with Toyama prefecture's oldest temple bell and an uncommonly large Umbrella pine.

3-6-9 Honmachi, Imizu  
☎ 0766-84-8066



**3 Kawa-no-Eki Shinminato Riverside Station**

A souvenir shop, a cafe with local products, a Hikiyama (festival float) exhibition and a walking map of the Uchikawa area.

1-26 Tatemachi, Imizu  
☎ 0766-30-2552



**4 Hojozu Hachimangu Shrine**

This shrine is said to have been established by Yakamochi Ootomono in the Nara period (710-794). Each year an Autumn Hikiyama festival float is held here on the 1st October.

2-2-27 Hachimanmachi, Imizu  
☎ 0766-84-3449



**10 Toyama Prefecture Shinminato Marina**

One of the most prestigious marine facilities on the Japan sea with a wide range of marine activities including marine sports, fishing, motor boating, sailing etc.

2 Kairyushinmachi, Imizu  
☎ 0766-84-5440



**5 Shinminato Kittokito Marketplace and midday auction (observation)**

A seafood market selling fresh locally caught delicacies including white shrimp and red snow crabs. Observation of the Shinminato midday seafood auctions are also available in the adjacent area, a rarity in Japan.

1 Kaiomachi, Imizu  
☎ 0766-84-1233



**7 Shinminato Sightseeing boat tour of Uchikawa bridges**

Enjoy a boat tour of Shinminato port and Uchikawa river, taking in it's twelve unique bridges and scenic riverside paths.

2 Kaiomachi, Imizu  
☎ 0766-82-1830

Letter	Name	Address	Contact
A	Dai-ichi Inn Shinminato (Hotel)	2-10-35 Honmachi, Imizu	☎ 0766-82-4111
B	Minnato (Japanese private accommodation)	2-6-13 Honmachi, Imizu	☎ 080-2571-1707
C	Satomin Place (Japanese private accommodation)	22-3 Hojozumachi, Imizu	☎ 050-3635-7213
D	KAMOME/UMINEKO (Seaside Hotel)	19-18 Hojozumachi, Imizu	☎ 090-2379-7575
E	Uchikawa no Ie Nago (Japanese private accommodation)	17-5 Hojozumachi, Imizu	☎ 0766-75-3137
F	Zenraku (Japanese private accommodation)	1-13-2 Hachimanmachi, Imizu	☎ 0766-55-3515
G	Tenjin no Ie (accommodation and local interaction facility)	1-4-20 Hachimanmachi, Imizu	☎ 0766-75-3137
H	Hikogoro (Japanese Minshuku)	3 Ebie, Imizu	☎ 0766-86-0319
I	Aoyama Arisotei (Japanese Minshuku)	193 Shichiminakano, Imizu	☎ 0766-86-2215
J	Asuka shokudo (business hotel and cafeteria)	217 Nunome, Imizu	☎ 0766-84-1313
K	Relaxing house de Akemi (Guest house)	219 Takaki, Imizu	☎ 0766-92-0660
L	Matsubaraya (Hotel)	3971-1 Sanga, Imizu	☎ 0766-55-0034
M	Super Hotel Imizu (Hotel)	3967-1 Sanga, Imizu	☎ 0766-89-9010
N	Taiko no Yu Hotel (Hotel)	5424 Kurokawa, Imizu	☎ 0766-56-9089
O	Jingoro (Japanese private accommodation)	6831 Kushita, Imizu	☎ 0766-54-1023

## STAY Places to stay in Imizu

<b>11 Ebie Seaside Park</b> Enjoy the beauty of this garden and it's seaside view. The park is equipped with a public toilet area and car parking. You may be able to get a glimpse of yachts entering bay and in summer the area is a popular swimming spot. 2 Kaiomachi, Imizu ☎ 0766-51-6684 (Imizu River and Harbor Division)	<b>12 Kanbee house (former Tanaka residence)</b> Former residence a family who made their fortune in the shipping industry. In 2017 the main residence, detached rooms, storage area and garden gate were register as national cultural properties. 2280 Hongo, Imizu ☎ 0766-54-6641	<b>13 Shinminato Museum</b> Exhibiting the works of Nobuyoshi Ishikuro a talented local surveyor who was known as the Ino Tadataka of Echū area. Some of these works have been preserved and handed down for four generations. 299 Kaganomiya, Imizu ☎ 0766-83-0800	<b>14 Kamon park Shinminato Roadside Station</b> A restaurant and fast-food spot where you can try specialties made from local white shrimp and enjoy shopping for souvenirs. 296 Kaganomiya, Imizu ☎ 0766-83-0111
<b>15 Kamo shrine</b> A branch Shrine of Shimokamo Shrine in Kyoto, even now Kamo Shrine preserves and maintains Heian era culture. More than 50 unique ceremonies are held at the shrine each year. 630 Kamochubu, Imizu ☎ 0766-59-2654	<b>16 Oshima Museum of Picture Books</b> With more than 10,000 picture books of both Japanese and international authors, you can enjoy reading or exploring picture book exhibitions. Picture book making and craft workshops are also held regularly. 50 Tottori, Imizu ☎ 0766-52-6780	<b>17 Rennoji Temple. Kosugi Great Buddha Statue</b> An ancient Shingon Buddhist temple. It's wooden statue of Amidanyorai standing 5m tall makes up one of the three great Buddha statues in Echū together with the others in Shogawa and Takaoka. 1597 Sanga Takadera, Imizu ☎ 0766-55-0157	<b>18 Jussyaookami Shrine</b> Known as the Ise of Toyama Jussyaookami Shrine is a branch shrine of the Ise Grand Shrine. It enshrines a god that is said to have been an assimilation of 14 individual deities. 1753 Sanga Takadera, Imizu ☎ 0766-55-0059
<b>19 Kosugi Exhibition Hall</b> A register national culture property Kasugi Exhibition Hall is know all over Japan for its pottery exhibitions. Both permanent and limited time exhibitions are held all year round. 4286-1 Hibari, Imizu ☎ 0766-55-3338	<b>20 Old Hokuriku road</b> Part of a road system connecting east and west Japan, the Old Hokuriku road passes right through the Kosugi area. Even now you can enjoy the traditional buildings, historical remains and atmosphere of the road. Sanga, Imizu ~ Hibari etc.	<b>21 Takeuchi Genzo Memorial Hall</b> Exhibiting the carved works of skilled plasterer and craftsman Genzo Takeuchi from Kosugi. Kotee (plaster art) experience classes are also held regularly. 2289-1 Hibari, Imizu ☎ 0766-55-3288	<b>22 Takumi no Sato Pottery Studio</b> Located in an area famous for its Asuka era mita tiles and sue-ware ceramics. This pottery studio and workshop boast a variety of engaging classes from beginner to advanced. You can also browse gift store for ceramics mugs and tea cups. 17 Ko Mitoda, Imizu ☎ 0766-54-1201

## Imizu's festivals

One of Hojozu Hachimangu Shrines annual Autumn festivals, the Shinminato Hikiyama (festival float) is the largest in Toyama, including 13 floats. The Hikiyama travels through the narrow streets of Shinminato bravely navigating sharp turns as the participants shout "Iyasa!, Iyasa!". The floats are decorated as flowers during the day and paper lanterns at night making it a truly spectacular event.

Held at Kaguraoka Shrine this shishimai performance includes a rare scene in which a mother lion gives birth to a child. The festival is held to wish for safe child delivery and prosperity of offspring.

Grand Spring Festival Yansama  
Held at Kamo Shrine to bring in a rich harvest for the year this spring festival includes an ancient Shinto Yabusame ceremony, where riders demonstrate archery from top galloping horse.

1st of October  
**Shinminato Hikiyama Festival**

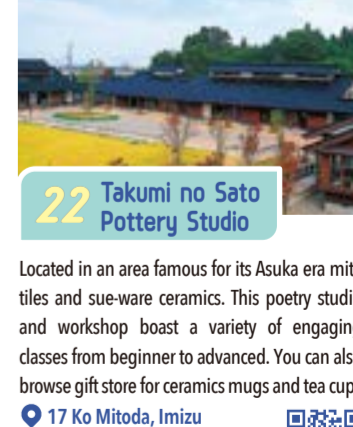
4th of September  
**Kamo Shrine Children's dance**  
Shishimai performers and portable shrines travel around the area collecting impurities before running them through flames for cleansing.

10th of September  
**Kushida Shrine Fire Walking Ritual**  
Featuring three floats said to have been made by one of Japan top puppet makers, this Hikiyama (festival float) travels around Ebie and Kamo Shrine with young people pulling and chanting.

The day before sports day (October)  
**Daimon Hikiyama Festival**

Held regularly in Autumn this Hikiyama (festival float) features four majestic floats parading around the Daimon area and then crossing the Daimon bridge over Shogawa river.

Autumnal Equinox Day (late September)  
**Ebie Hikiyama Festival**



## GUIDE

**Tourist volunteer information**  
Volunteer guides can show you around Imizu's attraction spots! Please apply using the site below (kirarakaimizukankou NAVI)

Applications  
kirarakaimizukankou NAVI  
https://www.imizu-kanko.jp/volunteer

Precautions  
Guide fee is 1000 yen, please apply at least one week prior to your requested day.

Inquiries  
Imizu City Tourism Volunteer Council (Imizu City Tourism Association)  
☎ 0766-84-4649