

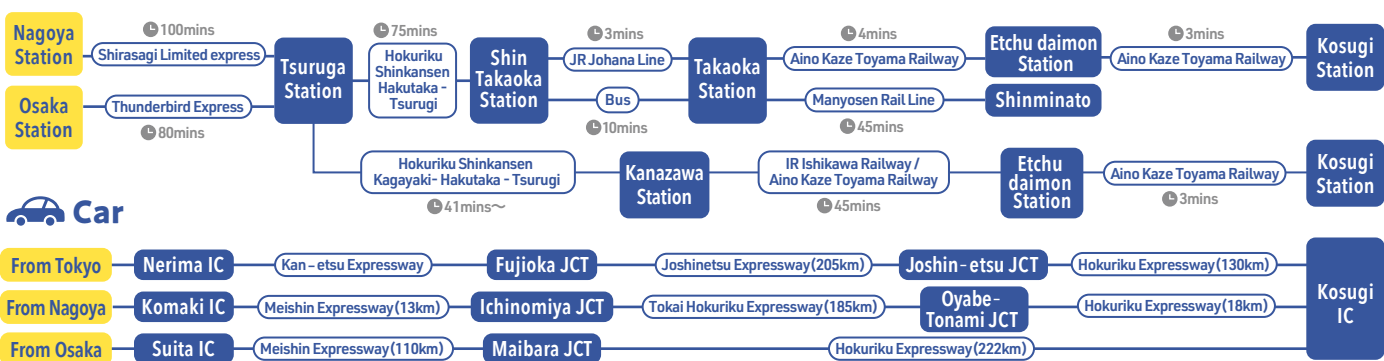
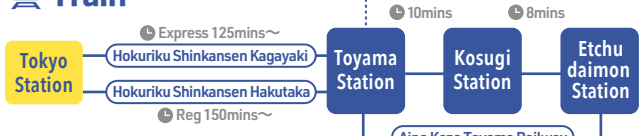
ACCESS

From within Japan

Air travel



Train



From within Toyama

From Toyama Station

To Shinminato
Ai no Kaze Toyama Railway (Towards Kanazawa) - From Toyama Station to Takaoka Station (18min). From Takaoka Station Manyosen Rail Line - From Takaoka Station Tram stop to Shinminato (45min).

To Kosugi
Ai no Kaze Toyama Railway (Towards Kanazawa) - From Toyama Station to Kosugi Station (10min). From Kosugi Station to Shinminato take the Community bus.

From Shintakaoka Station

To Shinminato
JR Johana Line (to Takaoka) - From Shintakaoka Station to Takaoka Station (3min). From Takaoka Station Manyosen Rail Line - From Takaoka Station Tram stop to Shinminato (45min).

To Kosugi
JR Johana Line (to Takaoka) - From Shintakaoka Station to Takaoka Station (3min). From Takaoka Station Ai no Kaze Toyama Railway (Towards Toyama). Takaoka Station to Kosugi Station (7min).

From Takaoka Station

To Shinminato
From Takaoka Station Manyosen Rail Line - From Takaoka Station Tram stop to Shinminato (45min).

To Kosugi
From Takaoka Station Ai no Kaze Toyama Railway (Towards Toyama). Takaoka Station to Kosugi Station (7min).

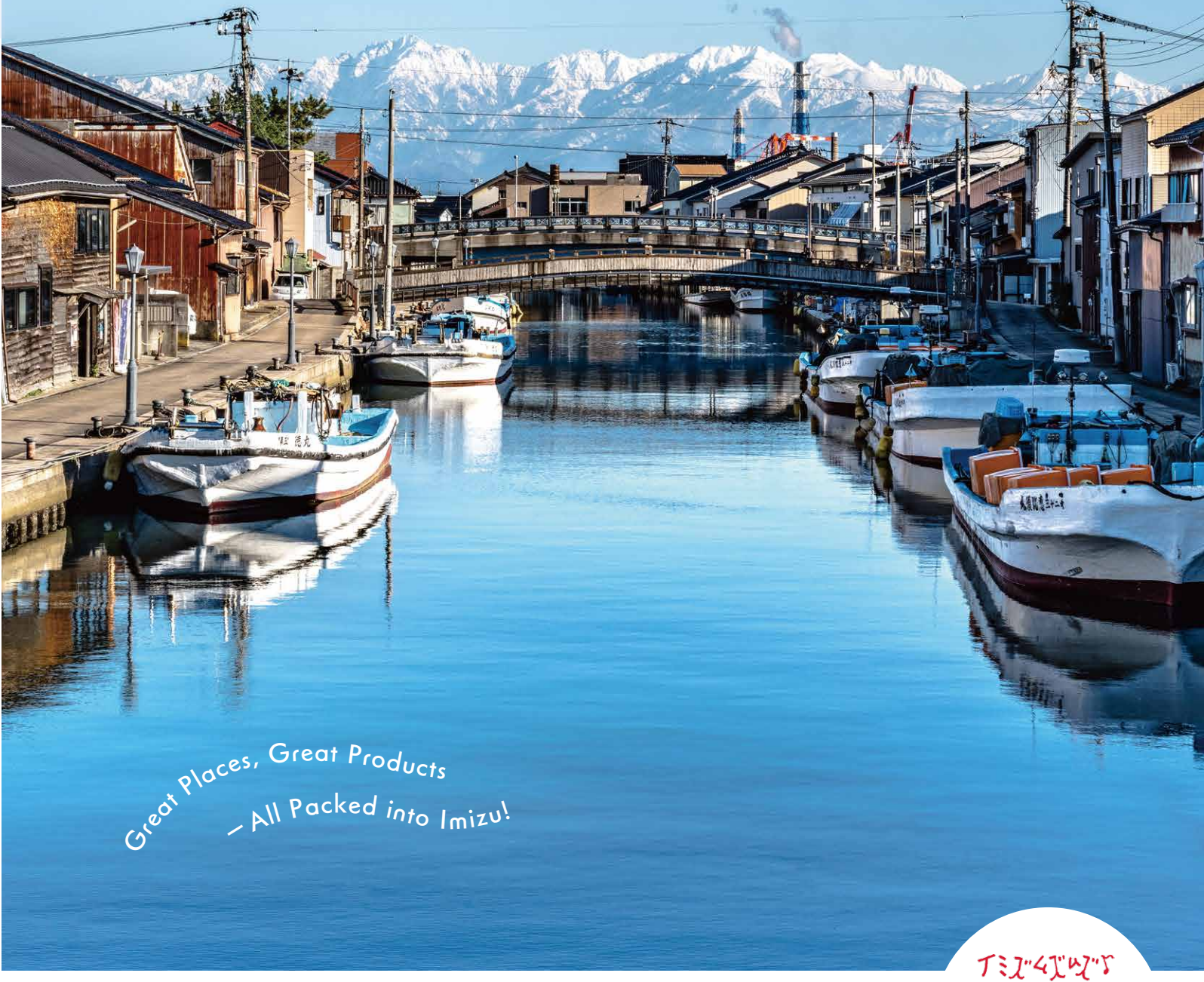


Local specialties in Imizu

Toyama bay is known as "Nature's fish pen" due to its unique shape boasts fishing grounds within very close proximity of its seafood markets. This makes the catches sold in Imizu exceedingly fresh. Furthermore as Imizu city is wedged between both Jinzugawa and Shogawa rivers it is a perfect place to grow a wide variety delicious fruits and vegetables. Please come and relish in the bounty of both the sea and nature here in Imizu.

IMIZU

Toyama Prefecture, Imizu City



Great Places, Great Products
- All Packed into Imizu!



Imizu City Tourism and Town Development Division TEL : 0766-51-6676



Imizu Bay Area

Shinminato - Hojjozu - Horioka - Ebie area



MOBILITY

G Bay gurun
Take a slow paced (19km) tour on a three wheeled electric buggy. Being driven around as many as 70 tour spots in the bay area, a riverside course is also available.
☎ 0766-82-6277 (Kaio Transportation Group Limited)

C Bay car
This electric rental car for four people is the perfect way to enjoy the bay area while driving. (License required)
☎ 0766-84-9600 (Crossbay Shinminato)

T Bay Trike
A fun way to enjoy the bay area and its narrow streets by electric trike. (License required)
☎ 0766-84-9600 (Crossbay Shinminato)

Rental bike
A bike rental service that can be rented and returned around the Imizu Bay area. Adult and children's bikes are available, as well as electric bikes and cross bikes.
☎ 1 day 500 yen (9:00-17:00)
☎ 0766-84-9600 (Crossbay Shinminato)
☎ 0766-30-2552 (Kawa-no-Eki)
☎ 0766-82-1830 (Shinminato Sightseeing boat)
☎ 0766-83-0255 (Imizu Tourist Information center)

8 Kaiwomaru Park

With over 1 million visitors each year Kaiwomaru Park is one of the most well known tourist spots in Toyama. The Kaiwomaru was sail boat used for sailing training over a period of 60 years; it now sits open to the public in the park with the picturesque Tateyama mountain range in it's background. The park also has a cafe and wild bird sanctuary.

☎ 8 Kaiomachi, Imizu
☎ 0766-82-5181

9 Shinminato Bridge

Connecting Shinminato port with a length of 3.6km Shinminato Bridge is the largest cable bridge on Japan sea coastline. On clear days you can take in beautiful views of both the Tateyama mountain range and Notohanto Island. With vehicle access above and a walkway underneath you can enjoy both a drive or a walk along Ainokaze promenade.

☎ Kaiomachi ~ Kairyumachi ☎ 0766-84-8292 (Toyama New Port Management Office)

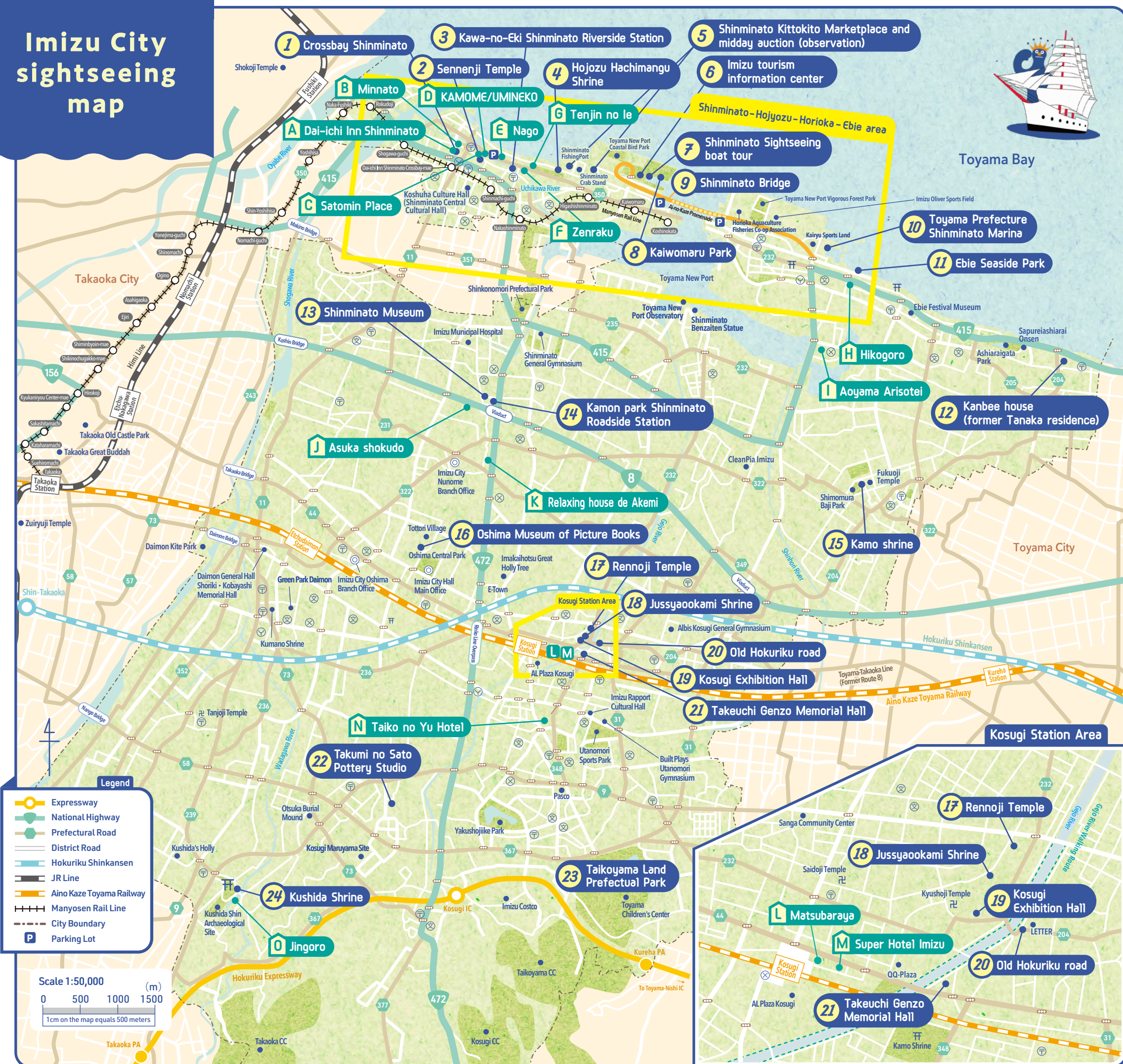
6 Imizu tourism information center

Positioned in the center of the bay area Imizu tourist center has a wide range of event information, sightseeing maps and pamphlets. The center is covered in Muzumuzukun art so you can't miss it.

☎ 2 Kaiomachi, Imizu ☎ 0766-83-0255



Imizu City sightseeing map



1 Crossbay Shinminato

A multipurpose center with a tourist information corner, cafe, sightseeing map of the bay area and regularly held weekend events.

2-10-30 Honmachi, Imizu
☎ 0766-84-9600



2 Sennenji Temple

A well known temple with Toyama prefecture's oldest temple bell and an uncommonly large Umbrella pine.

3-6-9 Honmachi, Imizu
☎ 0766-84-8066



3 Kawa-no-Eki Shinminato Riverside Station

A souvenir shop, a cafe with local products, a Hikiyama (festival float) exhibition and a walking map of the Uchikawa area.



4 Hojozu Hachimangu Shrine

This shrine is said to have been established by Yakamochi Ootomono in the Nara period (710-794). Each year an Autumn Hikiyama festival float is held here on the 1st October.

2-2-27 Hachimanmachi, Imizu
☎ 0766-84-3449



10 Toyama Prefecture Shinminato Marina

One of the most prestigious marine facilities on the Japan sea with a wide range of marine activities including marine sports, fishing, motor boating, sailing etc.

2 Kaiyushinmachi, Imizu
☎ 0766-86-5440



5 Shinminato Kittokito Marketplace and midday auction (observation)

A seafood market selling fresh locally caught delicacies including white shrimp and red snow crabs. Observation of the Shinminato midday seafood auctions are also available in the adjacent area, a rarity in Japan.



7 Shinminato Sightseeing boat tour of Uchikawa bridges

Enjoy a boat tour of Shinminato port and Uchikawa river, taking in it's twelve unique bridges and scenic riverside paths.



14 Kamon park Shinminato Roadside Station

A restaurant and fast-food spot where you can try specialties made from local white shrimp and enjoy shopping for souvenirs.

296 Kaganomiya, Imizu
☎ 0766-83-0111



13 Shinminato Museum

Exhibiting the works of Nobuyoshi Ishikuro a talented local surveyor who was known as the Ino Tadataka of Echū area. Some of these works have been preserved and handed down for four generations.

299 Kaganomiya, Imizu
☎ 0766-83-0800



18 Jussyaoakami Shrine

Known as the Ise of Toyama Jussyaoakami Shrine is a branch shrine of the Ise Grand Shrine. It enshrines a god that is said to have been an assimilation of 14 individual deities.

1753 Sanga Takadera, Imizu
☎ 0766-55-0059



17 Rennoji Temple, Kosugi Great Buddha Statue

An ancient Shingon Buddhist temple. It's wooden statue of Amidanyorai standing 5m tall makes up one of the three great Buddha statues in Echū together with the others in Shogawa and Takaoka.

1597 Sanga Takadera, Imizu
☎ 0766-55-0157



21 Takeuchi Genzo Memorial Hall

Exhibiting the carved works of skilled plasterer and craftsman Genzo Takeuchi from Kosugi. Kotee (plaster art) experience classes are also held regularly.

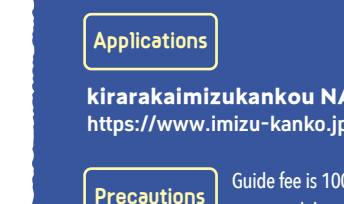
2289-1 Hibari, Imizu
☎ 0766-55-3288



22 Takumi no Sato Pottery Studio

Located in an area famous for its Asuka era mita tiles and sue-ware ceramics. This pottery studio and workshop boast a variety of engaging classes from beginner to advanced. You can also browse gift store for ceramics mugs and tea cups.

17 Ko Mitoda, Imizu
☎ 0766-54-1201



23 Taikoyama Land Prefectural Park

Built to commemorate the 100 year anniversary of Toyama prefectures establishment, Taikoyama Land is the biggest inner city park in Toyama. With its abundant greenery and waterways there are plenty of spots to be enjoyed by both children and adults alike.



24 Kushida Shrine

A famous shrine in the area well known for its deity of matchmaking and marital happiness. Highlights include its 250m long walkway and it's legend that it has been visited by many important military warlords including the poet Yakamochi Ootomo.

4774-6 Kurokawa, Imizu
☎ 0766-56-6116



11 Ebie Seaside Park

Enjoy the beauty of this garden and it's seaside view. The park is equipped with a public toilet area and car parking. You may be able to get a glimpse of yachts entering bay and in summer the area is a popular swimming spot.

2280 Hongo, Imizu
☎ 0766-51-6684
(Imizu River and Harbor Division)



12 Kanbee house (former Tanaka residence)

Former residence a family who made their fortune in the shipping industry. In 2017 the main residence, detached rooms, storage area and garden gate were register as national cultural properties.

50 Tottori, Imizu
☎ 0766-54-6641



15 Kamo shrine

A branch Shrine of Shimokamo Shrine in Kyoto, even now Kamo Shrine preserves and maintains Heian era culture. More than 50 unique ceremonies are held at the shrine each year.

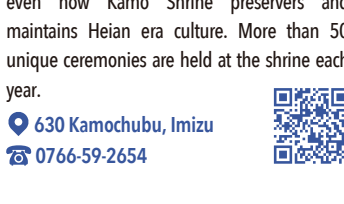
630 Kamocho, Imizu
☎ 0766-59-2654



16 Oshima Museum of Picture Books

With more than 10,000 picture books of both Japanese and international authors, you can enjoy reading or exploring picture book exhibitions. Picture book making and craft workshops are also held regularly.

50 Tottori, Imizu
☎ 0766-52-6780



19 Kosugi Exhibition Hall

A register national culture property Kosugi Exhibition Hall is know all over Japan for its pottery exhibitions. Both permanent and limited time exhibitions are held all year round.

4286-1 Hibari, Imizu
☎ 0766-55-3338



20 Old Hokuiriku road

Part of a road system connecting east and west Japan, the Old Hokuiriku road passes right through the Kosugi area. Even now you can enjoy the traditional buildings, historical remains and atmosphere of the road.

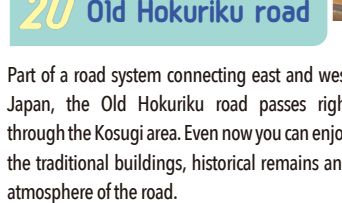
Sanga, Imizu ~ Hibari etc.



23 Taikoyama Land Prefectural Park

Built to commemorate the 100 year anniversary of Toyama prefectures establishment, Taikoyama Land is the biggest inner city park in Toyama. With its abundant greenery and waterways there are plenty of spots to be enjoyed by both children and adults alike.

4774-6 Kurokawa, Imizu
☎ 0766-56-6116



24 Kushida Shrine

A famous shrine in the area well known for its deity of matchmaking and marital happiness. Highlights include its 250m long walkway and it's legend that it has been visited by many important military warlords including the poet Yakamochi Ootomo.

6841 Kushita, Imizu
☎ 0766-54-1733

STAY Places to stay in Imizu

A Dai-ichi Inn Shinminato (Hotel) 2-10-35 Honmachi, Imizu ☎ 0766-82-4111	F Zenraku (Japanese private accommodation) 1-13-2 Hachimanmachi, Imizu ☎ 0766-55-3515	K Relaxing house de Akemi (Guest house) 219 Takaki, Imizu ☎ 0766-92-0660
B Minnato (Japanese private accommodation) 2-6-13 Honmachi, Imizu ☎ 080-2571-1707	G Tenjin no ie (accommodation and local interaction facility) 1-4-20 Hachimanmachi, Imizu ☎ 0766-75-3137	L Matsubara (Hotel) 3971-1 Sanga, Imizu ☎ 0766-55-0034
C Satomin Place (Japanese private accommodation) 22-3 Hojozumachi, Imizu ☎ 050-3635-7213	H Hikogoro (Japanese Minshuku) 3 Ebie, Imizu ☎ 0766-86-0319	M Super Hotel Imizu (Hotel) 3967-1 Sanga, Imizu ☎ 0766-89-9010
D KAMOME/UMINEKO (Seaside Hotel) 19-18 Hojozumachi, Imizu ☎ 090-2379-7575	I Aoyama Arisotei (Japanese Minshuku) 193 Shichiminakano, Imizu ☎ 0766-86-2215	N Taiko no Yu Hotel (Hotel) 5424 Kurokawa, Imizu ☎ 0766-56-9089
E Uchikawa no ie Nago (Japanese private accommodation) 17-5 Hojozumachi, Imizu ☎ 0766-75-3137	J Asuka shokudo (Business hotel and cafeteria) 217 Nunome, Imizu ☎ 0766-84-1313	O Jingoro (Japanese private accommodation) 6831 Kushita, Imizu ☎ 0766-54-1023



Imizu's festivals

One of Hojozu Hachimangu Shrines annual Autumn festivals, the Shinminato Hikiyama (festival float) is the largest in Toyama, including 13 floats. The Hikiyama travels through the narrow streets of Shinminato bravely navigating sharp turns as the participants shout "Iyasa!, Iyasa!". The floats are decorated as flowers during the day and paper lanterns at night making it a truly spectacular event.

Held at Kaguraoka Shrine this shishimai performance includes a rare scene in which mother lion gives birth to a child. The festival is held to wish for safe child delivery and prosperity of offspring.



Akai parent and child Shishimai dance

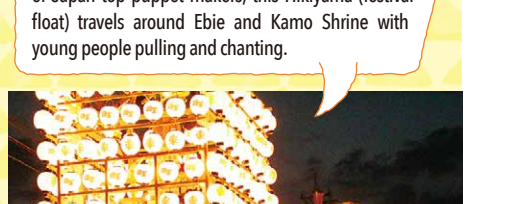
Grand Spring Festival Yansanma
1st of May



Held at Kamo Shrine to bring in a rich harvest for the year this spring festival includes an ancient Shinto Yabusane ceremony, where riders demonstrate archery from atop galloping horse.

Shishimai performers and portable shrines travel around the area collecting impurities before running them through flames for cleansing.

Kushida Shrine Fire Walking Ritual
10th of September



Featuring three floats said to have been made by one of Japan top puppet makers, this Hikiyama (festival float) travels around Ebie and Kamo Shrine with young people pulling and chanting.



Ebie Hikiyama Festival

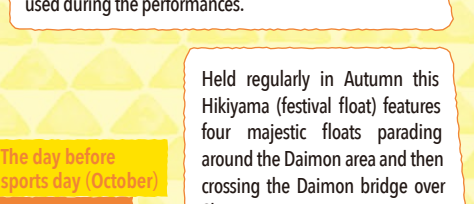


1st of October Shinminato Hikiyama Festival



4th of September Kamo Shrine Children's dance

A festival to give thanks for the year's harvest. Children perform 9 dances including Hoko no Mai (spear dance) and Ten no Mai (dance of the heavens). The festival is also known as Kattondo, a name derived from the music used during the performances.



Held regularly in Autumn this Hikiyama (festival float) features four majestic floats parading around the Daimon area and then crossing the Daimon bridge over Shogawa river.



Daimon Hikiyama Festival

GUIDE

Tourist volunteer information
Volunteer guides can show you around Imizu's attraction spots! Please apply using the site below (kirakaimizukankou NAVI)

Applications	Applications not accepted by phone
kirakaimizukankou NAVI https://www.imizu-kanko.jp/volunteer	
Precautions	Guide fee is 1000 yen, please apply at least one week prior to your requested day.
Inquiries	Imizu City Tourism Volunteer Council (Imizu City Tourism Association) ☎ 0766-84-4649